

GRIMSHAW

Press Release

Grimshaw announces prefabricated health facilities in partnership with SG Blocks Inc. and Osang Healthcare



Example of modular upcycled shipping container to create on-site health facility designed by Grimshaw

27 May 2020

For Immediate Release

Grimshaw is pleased to announce the D-Tec suite of prefabricated health facilities created in partnership with SG Blocks and Osang Healthcare for on-site immediate Covid-19 testing. The deployable technology line upcycles disused shipping containers as a foundation for a sturdy and sustainable solution to mass testing needs. D-Tec is being launched in its first iteration to rapidly respond to the needs that the Covid-19 pandemic has created for scalable, easy-to-assemble facilities that can be deployed and relocated on short notice. Prioritizing the mental health and wellbeing of patients and medical professionals alike, the design for the D-Tec suite aims to provide a safe, efficient environment for testing collection and onsite deployable laboratory analysis.

The first prototypes, slated for completion in June, are designed to facilitate a safe screening protocol while serving the greatest number of patients possible. Medical staff are inside the facility, separated from patients who approach the exterior. Testing can be done without contact between staff and patient.

An additional walk-up window allows patients to ask questions or follow up without interrupting the testing bays. Processing of samples is done within the facility in a properly equipped laboratory environment. This facility can deliver highly accurate test results in approximately three hours.

Drawing on Grimshaw's modular construction expertise, the shipping container units can be easily deployed and configured into different typologies depending on the desired application. Single and multi-unit typologies can accommodate standalone testing sites for sample collections, or sample collection units combined with a laboratory, or even sample collection units with a full-scale medical clinic created out of multiple container units.

The walk-in medical clinics can offer face-to-face screening and healthcare administration. The simplicity and duplication of the fabrication needs for each module expedites commission and delivery.

At the heart of Grimshaw's sustainability mission is to go beyond net zero carbon commitments and deliver uplifting design that is progressive and meaningful. Human health and wellbeing are inextricably linked to the health of the environment. The D-Tec suite provides a high-quality healthcare environment where people can feel safe and secure. The design provides ample space for social distancing, access to hand-washing stations and a purified air system so medical professionals and patients can be confident their health and wellbeing is protected throughout their visit.

Andrew Whalley, Grimshaw chairman states "Grimshaw recognizes the important role that a rapidly deployable solution has in opening up greater access to testing that people can trust and rely on. We have always aimed to deliver progressive architecture that strives for a better future, and we believe this suite of highly adaptable, efficient building solutions developed by our Industrial Design team will provide greater opportunities for the critical role testing, and people's trust in testing sites, will play as we move forward."

Paul Galvin, Chairman and CEO of SG Blocks Inc. commented "Grimshaw's commitment to human centric design combined with Osang's extremely accurate tests will enable SG Blocks to create turnkey testing facilities throughout the USA to provide access to the greatest number of people without compromising the needs of staff or users. We can think of no better partners to help supplement the existing health care system."

Dong-Hyun Lee, Chairman & Chief Executive Officer of OSANG Healthcare Co., Ltd. stated, "We view SG Blocks and Grimshaw as ideal partners to broaden distribution of our advanced tests and expand our ability to directly address this global pandemic in the USA. Our pipeline is substantial, we believe Grimshaw's commitment to sustainable, flexible design solutions combined with SG Blocks modular construction expertise has the ability to address logistical challenges."

The D-Tec suite aims to meet an urgent global demand for safe, easily deployable medical response solutions.

-ENDS-

Notes to Editors:

Images can be downloaded via: <https://we.tl/t-xAuPdJQE03>

All images credited to Grimshaw

For further information please contact Leah Kenealy, Communications Manager (leah.kenealy@grimshaw.global, +1 646 293 3655)

About Grimshaw

Grimshaw was founded by Sir Nicholas Grimshaw in 1980. The practice operates worldwide, across all major sectors, with offices in London, Paris, New York, Los Angeles, Dubai, Melbourne and Sydney, employing over 650 staff.

Grimshaw has been honoured with over 200 awards for its commitment to excellence and innovation, including 'Practice of the Year' and 'Building of the Year' at the 2019 AJ100. In 2019, Founder Sir Nicholas Grimshaw was awarded the Royal Gold Medal for Architecture by the Royal Institute of British Architects.

www.grimshaw.global

About SG Blocks, Inc.

SG Blocks, Inc. is a premier innovator in advancing and promoting the use of code-engineered cargo shipping containers for safe and sustainable construction. The firm offers a product that exceeds many standard building code requirements, and also supports developers, architects, builders and owners in achieving greener construction, faster execution, and stronger buildings of higher value. Each project starts with GreenSteel™, the structural core and shell of an SG Blocks building, and then customized to client specifications. For more information, visit www.sgblocks.com.

About OSANG Healthcare Co., Ltd.

OSANG Healthcare is a South Korea based global manufacturer and distributor of medical devices and in-vitro diagnostics solutions. Devoted since inception to the development of diagnostic biosensors for blood glucose measurement, OSANG Healthcare envisions medical devices becoming as commonplace as home appliances, easily measuring all diseases across the globe as “Technology for Human”. OSANG Healthcare currently exports its diagnostic biosensors for blood glucose, HbA1c and cholesterol to more than 110 countries, in its drive to become the leading researcher and developer of diagnostic sensors for heart disease and cancer, and of remote diagnosis systems. For more information, visit www.osanghc.com.

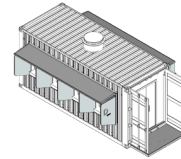
GRIMSHAW

SCHEDULE 1

D-Tec 1

Single twenty foot shipping containers adapted and fabricated into an eight or four person test collection unit with additional information window.

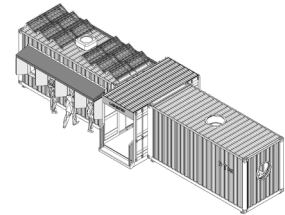
Photo Voltaic roof panels, battery storage and inverter pack



D-Tec 2

Two twenty foot shipping containers adapted and fabricated into an eight or four person test collection unit with additional information window and adjoining wet and dry lab to enable the analysis of tests using the Osang GeneFinder™ COVID-19 Plus RealAmp Kit

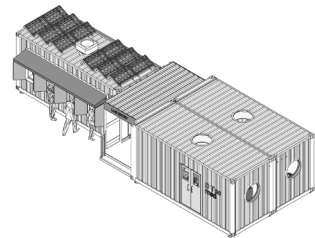
Photo Voltaic roof panels, battery storage and inverter pack



D-Tec 3

Three twenty foot shipping containers adapted and fabricated into an eight or four person test collection unit with additional information window and adjoining two units to provide a walk in health clinic with waiting and examination rooms.

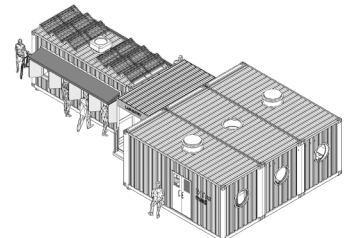
Photo Voltaic roof panels, battery storage and inverter pack



D-Tec 4

Four twenty foot shipping containers adapted and fabricated into a discreet test collection unit with waiting facility and adjoining three units to provide a walk in health clinic with waiting and examination rooms.

Photo Voltaic roof panels, battery storage and inverter pack



D-Tec 5

Five twenty foot shipping containers adapted and fabricated into mobile deployable laboratory to enable the analysis of tests using the Osang GeneFinder™ COVID-19 Plus RealAmp Kit. Comprising of an entrance locker room unit, two wet lab and one dry lab module and adjoining storage module. The units can be reconfigured to add or remove any of the modules to suit individual configuration needs

*Photo Voltaic roof panels, battery storage and inverter pack
Additional option of shading structures for use as waiting areas*

